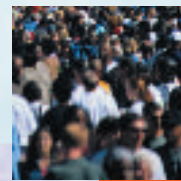
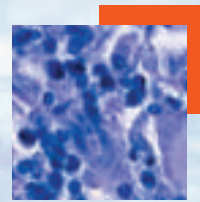


- 657 In this issue**
C Alvarez-Dardet, J R Ashton
- 658 Editorial**
 Politics and health
C Borrell, A Espelt, M Rodriguez-Sanz, V Navarro
- 712 Aphorism of the month**
 The age of Hygieia
L Levin
- 718 The JECH gallery**
 Natural alternatives
D S Morrison, K Beard
- 722 Speaker's corner**
 Publishing has become a "Russian roulette"
M Porta
- 660 Public health past and present**
 Dirt, disgust and disease: a natural history of hygiene
V A Curtis
- 665 Continuing professional education**
 Effect of socioeconomic status on the relationship between atmospheric pollution and mortality
O Laurent, D Bard, L Filleul, C Segala
- 676 Violence: a glossary**
A Rutherford, A B Zwi, N J Grove, A Butchart
- 681 Evidence based public health policy and practice**
 Greenspace, urbanity and health: relationships in England
R Mitchell, F Popham
- 684 A sense of coherence and health. Salutogenesis in a societal context: Åland, a special case?**
M Eriksson, B Lindström, J Lilja
- 689 Could targeted food taxes improve health?**
O Mytton, A Gray, M Rayner, H Rutter
- 695 Milk and dairy consumption, diabetes and the metabolic syndrome: the Caerphilly prospective study**
P C Elwood, J E Pickering, A M Fehily
- 699 Does the school fruit and vegetable scheme improve children's diet? A non-randomised controlled trial**
J K Ransley, D C Greenwood, J E Cade, S Blenkinsop, I Schagen, D Teeman, E Scott, G White, S Schagen
- 704 Age and follow-up time affect the prognostic value of the ECG and conventional cardiovascular risk factors for stroke in adult men**
C S Möller, J Häggström, B Zethelius, B Wiberg, J Sundström, L Lind
- 713 Research reports**
 Decline and loss of birth seasonality in Spain: analysis of 33 421 731 births over 60 years
R Cancho-Candela, J M Andrés-de Llano, J Ardura-Fernández
- 719 Outdoor air pollution and infant mortality: analysis of daily time-series data in 10 English cities**
S Hajat, B Armstrong, P Wilkinson, A Busby, H Dolk
- 723 Socioeconomic disadvantage in childhood and across the life course and all-cause mortality and physical function in adulthood: evidence from the Alameda County Study**
G Turrell, J W Lynch, C Leite, T Raghunathan, G A Kaplan
- 731 Does young adult suicide cluster geographically in Scotland?**
D J Exeter, P J Boyle

Contents continued on inside back cover



journal of
Epidemiology
& Community Health

Vol 61 No 8

Contents continued from outside back cover

- 737** A prospective study of polymorphisms of DNA repair genes XRCC1, XPD23 and APE/ref-1 and risk of stroke in Linxian, China
S Mahabir, C C Abnet, Y-L Qiao, L D Ratnasinghe, S M Dawsey, Z-W Dong, P R Taylor, S D Mark
- 742** **Theory and methods**
Building the backbone for organizational research in public health systems: development of measures of organizational capacity for chronic disease prevention
N Hanusaik, J L O'Loughlin, N Kishchuk, J Eyles, K Robinson, R Cameron
- PostScript**
- 750** Letters
751 Book review
751 Corrections
- 752** **Hygieia**

www.jech.com