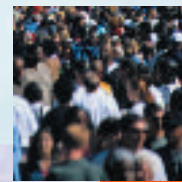
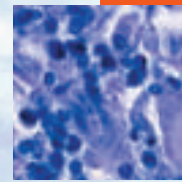


- In this issue**
 561 *C Alvarez-Dardet, J R Ashton*
- Editorials**
 562 Public health in India and the developing world: beyond medicine and primary healthcare
K S Jacob
 564 Invited commentary: persistent organic pollutants and childhood learning and behavioural disorders
S A Korrick, D C Bellinger
- Aphorism of the month**
 584 *L Levin and JRA*
- The JECH gallery**
 604 Changing public spaces for getting physical activity
J Green
- Speaker's corner**
 612 Cut to the chase: quickly achieving high coverage male circumcision
D Griffith, B Bellows, M Potts
- Public health past and present**
 566 Food panics in history: corned beef, typhoid and "risk society"
D F Smith
- Continuing professional education**
 571 A politics of health glossary
C Bambra, D Fox, A Scott-Samuel
- Evidence based public health policy and practice**
 575 Portrayal of health-related behaviours in popular UK television soap operas
T Verma, J Adams, M White
 578 Administration of hepatitis B vaccine in winter as a significant predictor of the poor effectiveness of vaccination in rural Mongolia: evidence from a nationwide survey
D Davaalkham, T Ojima, S Wiersma, T Lkhagvasuren, P Nymadawa, R Uehara, M Watanabe, I Oki, Y Nakamura
 585 What determines public support of obesity prevention?
A Hilbert, W Rief, E Braehler
- Research reports**
 591 Association of serum concentrations of persistent organic pollutants with the prevalence of learning disability and attention deficit disorder
D-H Lee, D R Jacobs, M Porta
 597 The effects of ill health on entering and maintaining paid employment: evidence in European countries
M Schuring, L Burdorf, A Kunst, J Mackenbach
 605 Socioeconomic status, status inconsistency and risk of ischaemic heart disease: a prospective study among members of a statutory health insurance company
R Peter, H Gässler, S Geyer
 613 Effects of community-care networks on psychiatric emergency contacts, hospitalization and involuntary admission
A I Wierdsma, H D Poodt, C L Mulder
 619 Suicide among male veterans: a prospective population-based study
M S Kaplan, N Huguet, B H McFarland, J T Newsom
 625 Prevalence and concordance of interpersonal violence reports from intimate partners: findings from the Pacific Islands Families Study
P J Schluter, J Paterson, M Feehan
 631 Is low folate a risk factor for depression? A meta-analysis and exploration of heterogeneity
S Gilbody, T Lightfoot, T Sheldon




Contents continued on inside back cover

journal of
Epidemiology
& **Community Health**

Vol 61 No 7

Contents continued from outside back cover

- 638** Helicobacter pylori colonisation and eczema
O Herbarth, M Bauer, G J Fritz, P Herbarth, U Rolle-Kampczyk, P Krumbiegel, M Richter, T Richter
- 641** Food and nutrient intakes and K-ras mutations in exocrine pancreatic cancer
 *E Morales, M Porta, J Vioque, T López, M A Mendez, J Pumarega, N Malats, M Crous-Bou, J Ngo, J Rifà, A Carrato, L Guarner, J M Corominas, F X Real, for the PANKRAS II Study Group*
- Theory and methods**
- 650** Uncertainty analysis: an example of its application for estimating a survey proportion
A M Jurek, G Maldonado, S Greenland, T R Church
- PostScript**
- 655** Letter
- 655** Correction
- 656** **Hygieia**



This paper is freely available online under the BMJ Journals unlocked scheme, see <http://jech.com/info/unlocked.dtl>

www.jech.com