

**In this issue**

177 *C Alvarez-Dardet, J R Ashton*

**Editorial**

178 Newspeak for epidemiologists  
*C C Tam*

**The JECH gallery**

214 Better homes, better neighbourhoods  
*H Thomson, M Petticrew, D Morrison*

**Aphorism of the month**

220 Caveat emptor – warning to consultants: the problem presented is not the real problem  
*L Levin and JRA*

**Speaker's corner**

231 Childhood obesity: every little bit helps  
*C T Aznar, L A Moreno*

**Research agenda**

180 Aetiological clues from the descriptive epidemiology of childhood acute lymphatic leukaemia and other malignancies  
*B Terracini, M M Maule*

**Public health past and present**

182 Prophylactic oophorectomy: a historical perspective  
*O Muscucci, A Clarke*

**Continuing professional education**

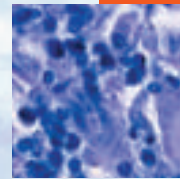
185 A glossary on psychiatric epidemiology  
*H Burger, J Neeleman*  
190 Oral presentation bias: a retrospective cohort study  
*E Decullier, F Chapuis*

**Evidence based public health policy and practice**

194 New directions in European public health research: report of a workshop  
*A Clarke, M McCarthy, C Álvarez-Dardet, S Sogoric, P Groenewegen, W Groot, D Delnoij*

**Research reports**

198 Health status of gypsies and travellers in England  
*G Parry, P V Cleemput, J Peters, S Walters, K Thomas, C Cooper*  
205 Health-related beliefs and experiences of gypsies and travellers: a qualitative study  
*P V Cleemput, G Parry, K Thomas, J Peters, C Cooper*  
211 The health impacts of housing-led regeneration: a prospective controlled study  
*H Thomson, D Morrison, M Petticrew*  
215 Life course body size and lipid levels at 53 years in a British birth cohort  
*P M L Skidmore, R J Hardy, D J Kuh, C Langenberg, M E J Wadsworth*  
221 Young women under 16 years with experience of sexual intercourse: who becomes pregnant?  
*K Buston, L Williamson, G Hart*  
226 Elective surgery for aortic abdominal aneurysm: comparison of English outcomes with those elsewhere  
*M Filipovic, M J Goldacre, L Gill*  
232 Individual and community-level effects in the socioeconomic inequalities of AIDS-related mortality in an urban area of southern Europe  
*M Mari-Dell'Olmo, M Rodriguez-Sanz, P Garcia-Olalla, M I Pasarín, M T Brugal, J A Caylà, C Borrell*  
241 Childhood IQ in relation to risk factors for premature mortality in middle-aged persons: the Aberdeen Children of the 1950s study  
*G D Batty, Ian J Deary, S Macintyre*



Contents continued on inside back cover

journal of  
**Epidemiology**  
**& Community Health**

Vol 61 No 3

Contents continued from outside back cover

- 248** Charcoal burning suicides in Hong Kong and urban Taiwan: an illustration of the impact of a novel suicide method on overall regional rates  
*K Y Liu, A Beautrais, E Caine, K Chan, A Chao, Y Conwell, C Law, D Lee, P Li, P Yip*
- 254** The effectiveness and cost effectiveness of a national lay-led self-care support programme for patients with long-term conditions: a pragmatic randomised controlled trial  
*A Kennedy, D Reeves, P Bower, V Lee, E Middleton, G Richardson, C Gardner, C Gately, A Rogers*
- Theory and methods**
- 262** Synthesising quantitative and qualitative research in evidence-based patient information  
*M R Goldsmith, J Austoker, C R Bankhead*
- PostScript**
- 271** Book reviews
- 271** Corrections
- 272** **Hygieia**

www.jech.com