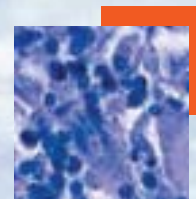


- In this issue**
- 737 Information/transparency/confidentiality/semiotics and public health
C Alvarez-Dardet, J R Ashton
- The JECH gallery**
- 750 10 teaspoons of sugar makes the waistline expand
T Trayers
- Aphorism of the month**
- 818 The problem with school health
L Levin, J R Ashton
- Speaker's corner**
- 823 Emerging issues in public health information
B C K Choi, A H Mokdad
- Continuing professional education**
- 738 Glossary on the World Trade Organisation and public health: part 2
R Labonte, M Sanger
- Evidence based public health policy and practice**
- 745 Perceived causes of sporadic cryptosporidiosis and their relation to sources of information
M F Doria, I Abubakar, Q Syed, S Hughes, P R Hunter
- 751 Health treaty dilution: a case study of Japan's influence on the language of the WHO Framework Convention on Tobacco Control
M Assunta, S Chapman
- 757 Some doubts about one of the largest smoking prevention programmes in Europe, the smokefree class competition
J-F Etter, P Bouvier
- Research reports**
- 760 Marital status and longevity in the United States population
R M Kaplan, R G Kronick
- 766 Social context and depression after a disaster: the role of income inequality
J Ahern, S Galea
- 771 Work related violence and threats and the risk of depression and stress disorders
J Wiecek, E Agerbo, P B Mortensen, H Burr, F Tüchsen, J P Bonde
- 776 Psychiatric illness, socioeconomic status, and marital status in people committing suicide: a matched case-sibling-control study
E Agerbo, P Qin, P B Mortensen
- 782 Psychosocial determinants of premature cardiovascular mortality differences within Hungary
M Kopp, Á Skrabski, Z Szántó, J Siegrist
- 789 Psychological distress and chronic obstructive pulmonary disease in the Renfrew and Paisley (MIDSPAN) study
T P I Pembroke, F Rasul, C L Hart, G Davey Smith, S A Stansfeld
- 793 Pain and health related functioning among employees
P Saastamoinen, P Leino-Arjas, M Laaksonen, P Martikainen, E Lahelma
- 799 Smoking trends in Italy from 1950 to 2000
C Sardu, A Mereu, G Pizzalis, L Minerba, P Contu
- Theory and methods**
- 804 Education, income, and occupational class cannot be used interchangeably in social epidemiology. Empirical evidence against a common practice
S Geyer, Ö Hemström, R Peter, D Vägerö
- 811 Bimodal virological response to antiretroviral therapy for HIV infection: an application using a mixture model with left censoring
X Li, H Chu, J E Gallant, D R Hoover, W J Mack, J S Chmiel, A Muñoz
- 819 Is an internal comparison better than using national data when estimating mortality in longitudinal studies?
T R Card, M Soleymani-Dodaran, R Hubbard, R F A Logan, J West

Contents continued on inside back cover



journal of
Epidemiology
& Community Health

Vol 60 No 9

Contents continued from outside back cover

- 822** **Book reviews**
Reaching the poor with health, nutrition, and population services: What works, what doesn't, and why
S R Sicchia
- 822** Assessing quality of life in clinical trials, 2nd ed
J Müller-Nordhorn
- 822** Methods for the economic evaluation of health care programmes, 3rd ed
G Adamiak
- 823** **Correction**
- 824** **Hygieia**