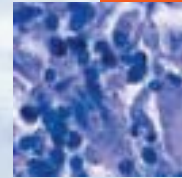


- In this issue**
- 553 Social medicine, theories and practice, the South African Diaspora, and the diffusion of ideas
C Alvarez-Dardet, J R Ashton
- South African Diaspora special**
- 554 A personal history: social medicine in a South African setting, 1952–5. Part I: The shape of ideas forged in the second world war
M Susser
- 558 Social medicine: national and international transfer of ideas
V Berridge
- 559 Things that kept coming to mind while thinking through Susser's South African memoir
M Porta
- Speaker's corner**
- 561 The health society: the need for a theory
I Kickbusch
- The JECH gallery**
- 563 Loving culture for a better life
D Gil
- Aphorism of the month**
- 570 Self fulfilling prophecy kills
L Levin
- Editorial**
- 562 Developed countries should be the focus for effectively reducing chronic disease
E J Buenz
- Continuing professional education**
- 564 A guide and glossary on postpositivist theory building for population health
R M Carpiano, D M Daley
- 571 Whose theory is it anyway?
J Popay
- 572 Speaking theoretically about population health
J R Dunn
- 573 Where does new theory come from?
D Vägerö
- 574 Theory building on the high seas of population health: Love Boat, Mutiny on the Bounty, or Poseidon Adventure?
R M Carpiano, D M Daley
- 578 Estimating causal effects from epidemiological data
M A Hernán, J M Robins
- Evidence based public health policy and practice**
- 587 Green space, urbanity, and health: how strong is the relation?
J Maas, R A Verheij, P P Groenewegen, S de Vries, P Spreuwenberg
- 593 Validity of self reported diagnoses of cancer in a major Spanish prospective cohort study
C Navarro, M D Chirlaque, M J Tormo, D Pérez-Flores, M Rodríguez-Barranco, A Sánchez-Villegas, A Agudo, G Pera, P Amiano, M Dorronsoro, N Larrañaga, J R Quirós, E Ardanaz, A Barricarte, C Martínez, M J Sánchez, A Berenguer, C A González
- 600 Uptake of screening for breast cancer in patients with mental health problems
U Werneke, O Horn, A Maryon-Davis, S Wessely, S Donnan, K McPherson
- 606 Myocardial infarction symptom recognition by the lay public: the role of gender and ethnicity
P A Ratner, R Tzianetas, A W Tu, J L Johnson, M Mackay, C E Buller, M Rowlands, B Reime



Contents continued on inside back cover

journal of
Epidemiology
& **Community Health**

Vol 60 No 7

Contents continued from outside back cover

- Research reports**
- 616** Parental share in public and domestic spheres: a population study on gender equality, death, and sickness
A Månsdotter, L Lindholm, M Lundberg, A Winkvist, A Öhman
- 621** Breast feeding and blood lipid concentrations in male Brazilian adolescents
C G Victora, B L Horta, P Post, R C Lima, J W De L Elizalde, B M C Gerson, F C Barros
- 626** Physical activity among elderly people in a city population: the influence of neighbourhood level violence and self perceived safety
F N Piro, Ø Næss, B Claussen
- Theory and methods**
- 633** Do biomarkers of stress mediate the relation between socioeconomic status and health?
J B Dowd, N Goldman
- 640** Transmission potential of primary pneumonic plague: time inhomogeneous evaluation based on historical documents of the transmission network
H Nishiura, M Schwehm, M Kakehashi, M Eichner
- Letter**
- 646** Income inequality and the prevalence of mental illness: a preliminary international analysis
K E Pickett, O W James, R G Wilkinson
- Book review**
- 647** Double standards in medical research in developing countries (Cambridge law, medicine and ethics)
D A Rier
- 648** **Hygieia**