

In this issue

- 457 The gendered effects on health of living arrangements, neighbourhood environment, and marital status
J R Ashton, C Alvarez-Dardet

Continuing professional education

- 458 Community health advocacy
S Loue

The JECH gallery

- 463 Evidence based intervention or diversion?
J R Ashton

- 501 Leading by example
J R Ashton

Aphorism of the month

- 512 "Everybody's greedy except you and me (and even you seem greedy sometimes)."
L Levin

Speaker's corner

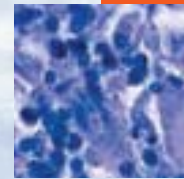
- 521 People's power in people's hands: the lesson we need to learn
B Sibal

Editorials

- 464 The legionnaires' outbreak in Barrow-in-Furness, summer 2002
D Telford, S Partridge, I Cumming, A Smith, N Calvert
- 466 Community acquired legionnaires' disease: lessons for surveillance from recent outbreaks
M Regan, B Olowokure

Research reports

- 468 Living arrangements and mental health in Finland
K Joutsenniemi, T Martelin, P Martikainen, S Pirkola, S Koskinen
- 476 Do perceptions of neighbourhood environment influence health? Baseline findings from a British survey of aging
A Bowling, J Barber, R Morris, S Ebrahim
- 484 Life course social roles and women's health in mid-life: causation or selection?
A McMunn, M Bartley, R Hardy, D Kuh
- 490 Does gender modify associations between self rated health and the social and economic characteristics of local environments?
A M Kavanagh, R Bentley, G Turrell, D H Broom, S V Subramanian
- 496 Influence of marital history over two and three generations on early death. A longitudinal study of Danish men born in 1953
R Lund, U Christensen, B E Holstein, P Due, M Osler
- 502 Influence of family type and parenting behaviours on teenage sexual behaviour and conceptions
C Bonell, E Allen, V Strange, A Oakley, A Copas, A Johnson, J Stephenson
- 507 Traffic intensity, dwelling value, and hospital admissions for respiratory disease among the elderly in Montreal (Canada): a case-control analysis
A Smargiassi, K Berrada, I Fortier, T Kosatsky
- 513 Income inequality and physical and mental health: testing associations consistent with proposed causal pathways
F J Zimmerman, J F Bell
- 522 Impact of a cultural belief about ghost month on delivery mode in Taiwan
H-C Lin, S Xirasagar, Y-C Tung
- 527 Childhood socioeconomic circumstances predict specific causes of death in adulthood: the Glasgow student cohort study
B Galobardes, G Davey Smith, M Jeffreys, P McCarron



Contents continued on inside back cover

journal of
Epidemiology
& Community Health

Vol 60 No 6

Contents continued from outside back cover

- Evidence based policy and practice**
- 530** Can Health Promoting Schools contribute to the better health and wellbeing of young people?
The Hong Kong experience
A Lee, F F K Cheng, Y Fung, L St Leger
- 537** Injecting and HIV prevalence among young heroin users in three Spanish cities and their association with the delayed implementation of harm reduction programmes
L de la Fuente, M J Bravo, C Toro, M T Brugal, G Barrio, V Soriano, F Vallejo, R Ballesta and Project Itinere Group
- 543** Review of syndromic surveillance: implications for waterborne disease detection
M Berger, R Shiau, J M Weintraub
- Letter**
- 551** On socioeconomic gradients in cancer registry data quality
F P Boscoe, C Sherman
- 552** **Hygieia**