

In this issue

- 185 A varied offering and an environmental flavour
C Alvarez-Dardet, J R Ashton

Editorial

- 186 Removing organs “just in case”—is prophylactic removal of the ovaries a good thing?
A Clarke, Y M Chang, K McPherson

The JECH gallery

- 191 A sign of the times
J R Ashton

Aphorism of the month

- 212 Public health is investment not cost
L Levin, J R Ashton

Continuing professional education

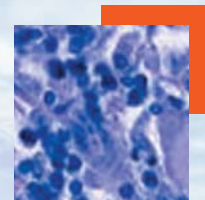
- 188 What same sex civil partnerships may mean for health
M King, A Bartlett
- 192 Infectious diseases epidemiology
M L Barreto, M G Teixeira, E H Carmo

Evidence based public health policy and practice

- 196 Use of health impact assessment in incorporating health considerations in decision making
C Davenport, J Mathers, J Parry
- 202 Effect of area poverty rate on cancer screening across US communities
M Schootman, D B Jeffe, E A Baker, M S Walker
- 208 Socioeconomic deprivation, travel distance, location of service, and uptake of breast cancer screening in North Derbyshire, UK
R Maheswaran, T Pearson, H Jordan, D Black
- 213 The polypill: at what price would it become cost effective?
O H Franco, E W Steyerberg, C de Laet

Research reports

- 218 Changes in socioeconomic inequalities in census measures of health in England and Wales, 1991–2001
J Adams, L Holland, M White
- 221 Sociodemographic predictors of antenatal and postpartum depressive symptoms among women in a medical group practice
J W Rich-Edwards, K Kleinman, A Abrams, B L Harlow, T J McLaughlin, H Joffe, M W Gillman
- 228 Socioeconomic lifecourse influences on women’s smoking status in early adulthood
H Graham, B Francis, H M Inskip, J Harman, and SWS Study Team
- 234 Children’s exposure to nitrogen dioxide in Sweden: investigating environmental injustice in an egalitarian country
B Chaix, S Gustafsson, M Jerrett, H Kristersson, T Lithman, Å Boalt, J Merlo
- 242 Prevalence of arsenic exposure and skin lesions. A population based survey in Matlab, Bangladesh
M Rahman, M Vahter, M A Wahed, N Sohel, M Yunus, P K Streatfield, S E Arifeen, A Bhuiya, K Zaman, A M R Chowdhury, E-C Ekström, L Å Persson
- 249 Injury mortality among ethnic minority groups in the Netherlands
I Stirbu, A E Kunst, V Bos, E F van Beeck
- 256 Respiratory diseases and pesticide exposure: a case-control study in Lebanon
P Salameh, M Waked, I Baldi, P Brochard, B A Saleh
- 262 Myocardial infarction deaths after high level exposure to particulate matter
Y Murakami, M Ono
- 267 Socioeconomic position and sleep quantity in UK adults
J Adams



Contents continued on inside back cover

journal of **Epidemiology**
& Community Health

Vol 60 No 3

Contents continued from outside back cover

- 270** Leisure time exercise and personal circumstances in the working age population:
longitudinal analysis of the British household panel survey
F Popham, R Mitchell
- 275** Skinfold thickness, body mass index, and fatal coronary heart disease: 30 year follow up
of the Northwick Park heart study
J Kim, T Meade, A Haines
- 280** **Hygieia**