

**In this issue**

- 909** Social puberty, gadgets, and the dynamics of public health  
*C Alvarez-Dardet, J R Ashton*

**Editorials**

- 910** Adults at 12? Trends in puberty and their public health consequences  
*M A Bellis, J Downing, J R Ashton*
- 911** European Medicines Agency policies for clinical trials leave women unprotected  
*M T Ruiz Cantero, M Angeles Pardo*

**Aphorism of the month**

- 913** "The conspiracy of silence in health care quality"  
*L Levin, J Ashcroft*

**Speaker's corner**

- 922** Health and social consequences in the quest for comfort, convenience and pleasure

**The JECH gallery**

- 944** Fernanda Giannasi: battling asbestos in Brazil  
*D F Salerno*

**Continuing professional education**

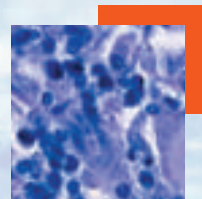
- 914** A glossary for the social epidemiology of work organisation: Part 1, social psychology  
*C Muntaner, J Benach, W C Hadden, D Gimeno, F G Benavides*

**Evidence based public health policy and practice**

- 917** Deprivation and quality of primary care services: evidence for persistence of the inverse care law from the UK Quality and Outcomes Framework  
*G McLean, M Sutton, B Guthrie*
- 923** Examining the effect of residential change on intimate partner violence risk  
*E Waltermaurer, L-A McNutt, M J Mattingly*

**Research reports**

- 928** Global health inequalities: an international comparison  
*J P Ruger, H-J Kim*
- 937** Lifelong socioeconomic trajectory and premature mortality (35–65 years) in France: findings from the GAZEL Cohort Study  
*M Melchior, L F Berkman, I Kawachi, N Krieger, M Zins, S Bonenfant, M Goldberg*
- 945** Patterns of mortality and their changes in France (1968–99): insights into the structure of diseases leading to death and epidemiological transition in an industrialised country  
*J Coste, E Bernardin, E Jougl*
- 956** Ecological association between suicide rates and indices of deprivation in the north west region of England: the importance of the size of the administrative unit  
*M Rezaeian, G Dunn, S St Leger, L Appleby*
- 962** Attempted suicide, psychological health and exposure to harassment among Japanese homosexual, bisexual or other men questioning their sexual orientation recruited via the internet  
*Y Hidaka, D Operario*
- 968** Does parity affect mortality among parous women?  
*H Koski-Rahikkala, A Pouta, K Pietiläinen, A-L Hartikainen*
- 974** The psychosocial versus material hypothesis to explain observed inequality in disability among older adults: data from the West of Scotland Twenty-07 Study  
*J A Adamson, S Ebrahim, K Hunt*



Contents continued on inside back cover

*journal of* **Epidemiology**  
**& Community Health**

Vol 60 No 11

Contents continued from outside back cover

- 981**     **Theory and methods**  
A life-course approach to measuring socioeconomic position in population health surveillance systems  
*C R Chittleborough, F E Baum, A W Taylor, J E Hiller*
- 993**     Validity of age at menarche self-reported in adulthood  
*R Cooper, M Blell, R Hardy, S Black, T M Pollard, M E J Wadsworth, M S Pearce, D Kuh*
- 998**     Ethics and governance of global health inequalities  
*J P Ruger*
- 1004**   **Hygieia**