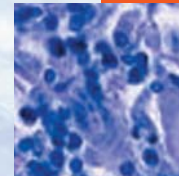


- In this issue**
- 253 Is epidemiology popular enough?
C Alvarez-Dardet, J R Ashton
- Editorials**
- 254 Highlighting the importance of "popular epidemiology"
G Morgan
- 254 Absence of spatial variation in rates of the common mental disorders
S Weich
- 257 Population ideals and sample realities—why we still need access to comprehensive information about populations
G Barrett, J L Peacock
- Poem**
- 258 Litter
L Tafari
- Speaker's corner**
- 259 Innovative ideas needed for timely and effective public health information dissemination
B C K Choi
- Aphorism of the month**
- 264 "Less is usually more."
J R Ashton, L Levin
- The JECH gallery**
- 302 The evils of drink and the temperance pioneers
J R Ashton
- Continuing professional education**
- 260 Poverty
M Mowafi, M Khawaja
- Evidence based public health policy and practice**
- 265 Putting the public back into public health
P Crowley, D J Hunter
- 268 Genetics and health inequalities: hypotheses and controversies
J P Mackenbach
- Research reports**
- 274 Residence in mountainous compared with lowland areas in relation to total and coronary mortality. A study in rural Greece
N Baibas, A Trichopoulou, E Voriadis, D Trichopoulos
- 279 Intrauterine growth and intelligence within sibling pairs: findings from the Mater-University study of pregnancy and its outcomes
D A Lawlor, W Bor, M J O'Callaghan, G M Williams, J M Najman
- 283 Risk of breast cancer after miscarriage or induced abortion: a Scottish record linkage case-control study
D H Brewster, D L Stockton, R Dobbie, D Bull, V Beral
- 288 Postnatal support for mothers living in disadvantaged inner city areas: a randomised controlled trial
M Wiggins, A Oakley, I Roberts, H Turner, L Rajan, H Austerberry, R Mujica, M Mugford, M Barker
- 296 Cultural identity, acculturation, and mental health among adolescents in east London's multiethnic community
K Bhui, S Stansfeld, J Head, M Haines, S Hillier, S Taylor, R Viner, R Booy
- 303 Risk modifying effect of social capital on measures of heavy alcohol consumption, alcohol abuse, harms, and secondhand effects: national survey findings
E R Weitzman, Y-Y Chen
- 310 Total and cause specific mortality among participants and non-participants of population based health surveys: a comprehensive follow up of 54 372 Finnish men and women
P Jousilahti, V Salomaa, K Kuulasmaa, M Niemelä, E Vartiainen



Contents continued on inside back cover

journal of
Epidemiology
& **Community Health**

Vol 59 No 4

Contents continued from outside back cover

- 316** Does financial strain explain the association between children's morbidity and parental non-employment?
C Reinhardt Pedersen, M Madsen, L Köhler
- 322** Neighbourhood characteristics, individual level socioeconomic factors, and depressive symptoms in young adults: the CARDIA study
C Henderson, A V Diez Roux, D R Jacobs Jr, C I Kiefe, D West, D R Williams
- 329** Socioeconomic inequalities in mortality within ethnic groups in the Netherlands, 1995–2000
V Bos, A E Kunst, J Garssen, J P Mackenbach
- 336** Linking questionnaires to primary care records: factors affecting consent in older people
T Harris, D G Cook, C Victor, C Beighton, S DeWilde, I Carey
- Letters**
- 339** The sex ratio of offspring of male gasoline filling station workers
W H James
- 339** Offspring sex ratio in men exposed to electromagnetic fields
M Saadat
- Book review**
- 339** Survival analysis using *S*. analysis of time-to-event data
S J Mandrekar
- 340** **Hygieia**