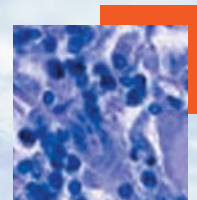


- In this issue**
- 813 Elephants in the living room and "ISMS" of all kinds—whimsical and reflective contributions from the board
C Alvarez-Dardet, J R Ashton
- Editorial**
- 814 Ideology, science, and public policy
N Milio
- Aphorism of the month**
- 815 "Every silver lining has a cloud (always look on the bright side of life)" (Lowell Levin)
J R Ashton
- Speaker's corner**
- 816 Aging by one who is aging
L J Duhl
- The JECH gallery**
- 885 An environmental face lift: the Dings Home-Zone project
T Trayers, D A Lawlor
- Continuing professional education**
- 818 Violence against women
G Krantz, C Garcia-Moreno
- Research reports**
- 822 Urban built environment and depression: a multilevel analysis
S Galea, J Ahern, S Rudenstine, Z Wallace, D Vlahov
- 828 Changes in the circumstances of young mothers in Britain: 1990 to 2000
K Nanchahal, K Wellings, G Barrett, A J Copas, C H Mercer, S Macmanus, W Macdowall, K A Fenton, B Erens, A M Johnson
- 834 Intimate partner violence among Canadian women with activity limitations
M M Cohen, T Forte, J Du Mont, I Hyman, S Romans
- 840 Prevalence of wife beating in Jordanian refugee camps: reports by men and women
M Khawaja, R Barazi
- 842 Maternal education, lone parenthood, material hardship, maternal smoking, and longstanding respiratory problems in childhood: testing a hierarchical conceptual framework
N Spencer
- 847 Substance misuse and psychiatric illness: prospective observational study using the general practice research database
M Frisher, I Crome, J Macleod, D Millson, P Croft
- 851 Employee worktime control moderates the effects of job strain and effort-reward imbalance on sickness absence: the 10-town study
L Ala-Mursula, J Vahtera, A Linna, J Pentti, M Kivimäki
- 858 Are intrinsic motivational factors of work associated with functional incapacity similarly regardless of the country?
A Väänänen, K Pahkin, P Huuhtanen, M Kivimäki, J Vahtera, T Theorell, R Kalimo
- 864 Assessment of publication bias in meta-analyses of cardiovascular diseases
S Palma, M Delgado-Rodriguez
- 870 Social mobility over the lifecourse and self reported mental health at age 50: prospective cohort study
P A Tiffin, M S Pearce, L Parker
- 873 Is patriarchy the source of men's higher mortality?
D Stanistreet, C Bamba, A Scott-Samuel
- Theory and methods**
- 877 Population health. More than the sum of the parts?
D D Reidpath
- 881 A bootstrap method to avoid the effect of concurvity in generalised additive models in time series studies of air pollution
A Figueiras, J Roca-Pardiñas, C Cadarso-Suárez



Contents continued on inside back cover

journal of
Epidemiology
& **Community Health**

Vol 59 No 10

Contents continued from outside back cover

- 886** Systematic reviews of health effects of social interventions: 2. Best available evidence: how low should you go?
D Ogilvie, M Egan, V Hamilton, M Petticrew
- 893** Thinking inside the bubble: evidence for a new contextual unit in urban mental health
R Whitley, M Prince, M Cargo
- 898** Accuracy of adults' recall of childhood social class: findings from the Aberdeen children of the 1950s study
G D Batty, D A Lawlor, S Macintyre, H Clark, D A Leon
- 904** Block observations of neighbourhood physical disorder are associated with neighbourhood crime, firearm injuries and deaths, and teen births
E Wei, A Hipwell, D Pardini, J M Beyers, R Loeber
- 909** Record linkage of domestic assault victims between an emergency department and the police
A Boyle, J Kirkbride, P Jones
- Letter**
- 911** Excess in cardiovascular events on Mondays: could atherosclerotic plaques be more vulnerable after the weekend because of alcohol related cytokine dysregulation?
V Čulić
- Book reviews**
- 911** Dicing with death. Chance, risk and health
R X de Menezes
- 911** A short introduction to epidemiology, 2nd edn
M Parascandola
- 912** **Hygieia**