

**In this issue**

- 1 Ecology, ecology, ecology  
*C Alvarez-Dardet, J R Ashton*

**The JECH gallery**

- 4 Cholera and a tale of two cities  
*J R Ashton*
- 30 Hygiene charter: laying down the spirit of the Healthy City  
*A Lee, K M Chan*

**Speakers' corner**

- 5 No smoking allowed. Mandatory and other strategies for tobacco control  
*M Nebot*

**Aphorism of the month**

- 14 Cost benefit analysis consists of weak definitions on both sides of the equation (Lowell Levin)  
*J R Ashton*

**Poem**

- 48 Tai Chi  
*L Tafari*

**Editorials**

- 2 Disentangling the effects of different components of socioeconomic status on health in early childhood  
*N J Spencer*
- 3 What next for low dose aspirin?  
*G Morgan*

**Continuing professional education**

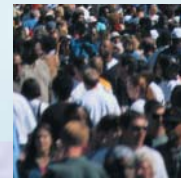
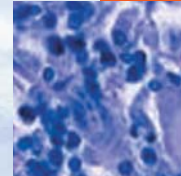
- 6 Ecological perspectives in health research  
*L McLaren, P Hawe*

**Evidence based public health policy and practice**

- 15 Environmental risks in the developing world: exposure indicators for evaluating interventions, programmes, and policies  
*M Ezzati, J Utzinger, S Cairncross, A J Cohen, B H Singer*

**Research reports**

- 23 Work related stressful life events and the risk of myocardial infarction. Case-control and case-crossover analyses within the Stockholm heart epidemiology programme (SHEEP)  
*J Möller, T Theorell, U de Faire, A Ahlbom, J Hallqvist*
- 31 Nonagenarians and centenarians in Switzerland, 1860–2001: a demographic analysis  
*J-M Robine, F Paccaud*
- 38 Relation between early life socioeconomic position and all cause mortality in two generations. A longitudinal study of Danish men born in 1953 and their parents  
*M Osler, A-M N Andersen, G D Batty, B Holstein*
- 42 Understanding the dimensions of socioeconomic status that influence toddlers' health: unique impact of lack of money for basic needs in Quebec's birth cohort  
*L Séguin, Q Xu, L Gauvin, M-V Zunzunegui, L Potvin, K L Frohlich*
- 49 Association between childhood and adulthood socioeconomic position and pregnancy induced hypertension: results from the Aberdeen children of the 1950s cohort study  
*D A Lawlor, S M B Morton, D Nitsch, D A Leon*
- 56 Effects of marital transitions on changes in dietary and other health behaviours in US male health professionals  
*P M Eng, I Kawachi, G Fitzmaurice, E B Rimm*
- 63 Work stress, smoking status, and smoking intensity: an observational study of 46 190 employees  
*A Kouvonen, M Kivimäki, M Virtanen, J Pentti, J Vahtera*
- 70 Depression and early retirement: prospective population based study in middle aged men  
*M Karpansalo, J Kauhanen, T A Lakka, P Manninen, G A Kaplan, J T Salonen*



Contents continued on inside back cover

journal of  
**Epidemiology**  
& **Community Health**

Vol 59 No 1

Contents continued from outside back cover

- Theory and methods**
- 75 Reliability and validity of the short form of the child health questionnaire for parents (CHQ-PF28) in large random school based and general population samples  
*H Raat, A M Botterweck, J M Landgraf, W C Hoogeveen, M-L Essink-Bot*
- Short report**
- 83 Consistency in gene-Alzheimer's disease association studies  
*J Llorca, T Dierssen-Sotos, O Combarros, J Berciano*
- Letter**
- 86 Multivariate regression analysis of associations between general practitioner prescribing rates for coronary heart disease drugs and healthcare needs indicators  
*P R Ward, P R Noyce, A S St Leger*
- Book reviews**
- 86 Health  
*D Gil, C Vives-Cases*
- 87 Global public goods for health; health economic public perspectives  
*J Kaul*
- 87 Health inequalities: lifecourse approaches  
*K Beckett-Milburn*
- 87 Violence against women: the health sector responds  
*A Paranjape*
- 87 MONICA monograph and multimedia sourcebook  
*C A Birt*
- 87 **Correction**
- 88 **Hygieia**